



The Quality Awning Brand
You Can Trust!



Day in day out Caribbean Quality Awnings show their efficiency & reliability on the façades and in the gardens of all types of properties.

There is an extensive range of systems and mounting brackets to cater for every application and requirement. Your local authorised distributor can arrange a free site survey to assess your requirements, discuss the options, advise on the best solution and give you a no obligation, no hassle quotation.

Every **Caribbean Quality Awning** is manufactured in the UK by Caribbean Blinds (UK) Ltd – market leader in the manufacture of exterior solar protection products.

Your **Caribbean Quality Awning** is built with pride and passion to your exact requirements by a team of highly trained technicians and state of the art machinery to ensure it meets exacting standards and is the pinnacle of precision.

Each **Caribbean Quality Awning** is carefully bench assembled before being rigorously tested & set up on an assembly rig, then despatched on dedicated vehicles to your property where it will be professionally installed to your complete satisfaction and give you years upon years of hassle free use and pure pleasure.

Every Caribbean Quality Awning carries:



CE mark - the internationally recognised quality benchmark for awnings

For complete peace of mind



**Five year guarantee
backed by Caribbean Blinds (UK) Ltd**



sun & shower protection all year round...

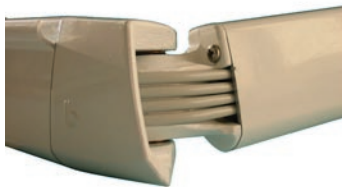
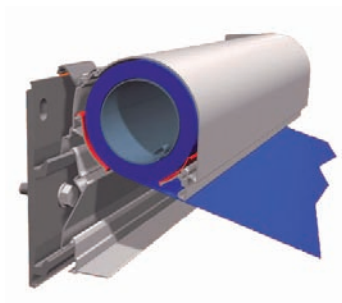


Why choose the Caribbean Quality Awnings brand?

**UK manufactured • Built to last • Durable
Reliable • Safe • Efficient • Stylish
Value for money**

All Caribbean Quality Awnings feature:

- Corrosion resistant, powder coated, extruded aluminium frameworks
- Stainless steel components for long lasting durability
- Drop forged joints meaning no weak points
- Heavy duty twin spring - cable tensioned arms (encapsulated in pvc) for optimum fabric tension at every position
- Fully adjustable angle for perfect sun & shower protection all year round



buy the best - forget the rest...

Index

4-5	the ultimate awnings
6	end fix awnings
7	multi fix awnings
8	fabrics
9	motors & controls
10	accessories
11	the many benefits

Did you know?

Caribbean Blinds (UK) Ltd (manufacturer of the Caribbean Quality Awnings brand) are full members of the BBSA (British Blind & Shutter Association), the governing body of the blind industry, for extra reassurance and peace of mind!



Bahamas - the universal solution

The unique design & slim measurements of the Bahamas make this awning suitable for all applications.

The Bahamas is built round a substantial extruded aluminium back which offers for multiple brackets & fixing points to be positioned throughout therefore ensuring a sound installation to any structure.

The elegantly finished, flush fitting full cassette casing ensures the fabric & components are protected from all types of inclement weather and insects when closed away.



the ultimate awnings...



Haitian - twin awning

The Haitian is a free standing, twin awning comprising of two Bahamas model awnings mounted back to back on a sturdy 'goal post' type aluminium framework offering coverage upto 36sq/m.

There are two base options available allowing the uprights to either be recessed into the ground or to locate within a galvanised steel, self supporting base which can be planted up with flowers.

WIDTH
Upto 13m

PROJECTION
Upto 3.75m

STANDARD FRAME COLOURS

Pure White ●

Dark Brown ●

(also Cream, Ivory & Stainless Steel Effect)

WIDTH
Upto 6m

PROJECTION
Upto 6m

best sellers...



Barbados



Barbados



Tortola

These awnings are built around a substantial extruded aluminium block at each end that securely attaches to heavy duty wall brackets.

Barbados

The streamline, flush fitting design of the Barbados makes it great for installation direct to a smooth flat wall.

The open back cassette casing offers good protection to the fabric & components from inclement weather when closed away.

Tortola

The modern rugby ball shape style of the Tortola makes it suitable for many applications especially those where there is limited mounting space.

The full cassette casing ensures the fabric & components are protected from all types of inclement weather when closed away.



Barbados



Tortola

WIDTH
Upto 5.5m

PROJECTION
Upto 3m

STANDARD FRAME COLOURS

Pure White ●

Dark Brown ●

end fix awnings...



Trinidad



Grenada



Martinique

These awnings are built around a steel torsion bar which runs the entire length of the awning and allows fixing brackets to be positioned anywhere along its length offering a strong fixing. The torsion bar facilitates all the components.

Grenada

This is the only awning in the range that can achieve a greater projection than its width thanks to its clever cross over arms which makes it great for those areas where there are width restrictions.

The design is an open system but with optional protective coverboard which is recommended to help protect the fabric & components from inclement weather when closed away.

Martinique

The largest awning in the range offering coverage upto 56sq/m from a wall mounted location.

Trinidad

Based on the Martinique featuring a unique 0.5m autovalance which offers optimum protection from the low sun. A gas strut & scissor bracing keep the autovalance taught.

Both the Martinique & Trinidad feature a full cassette casing that protects the fabric & components from all types of inclement weather when closed away.

WIDTH
Upto 14m

PROJECTION
Upto 4m

STANDARD FRAME COLOURS

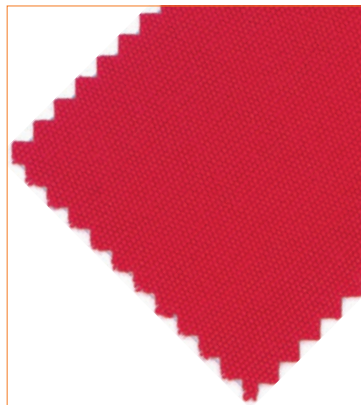
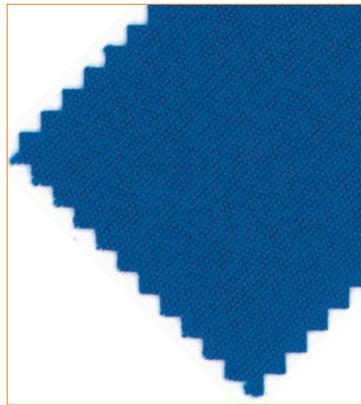
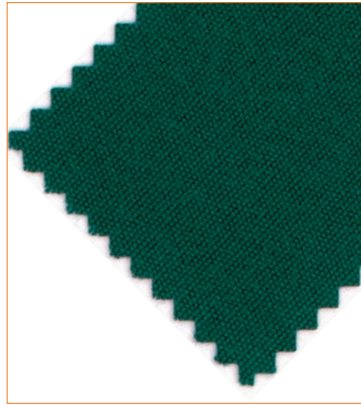
Pure White ●

Dark Brown ●

(also Cream, Ivory & Stainless Steel Effect)

This is the technical data for the Martinique. Both the Grenada & Trinidad varies.

multi fix awnings...



The fabric is the most important and conspicuous part of any solar protection system.

Your **Caribbean Quality Awning** is adorned with the finest 320g/m² spun dyed woven acrylic fabric. Choose from the most comprehensive collection available with over 170 different designs including the chance to design your own. From plains & blocks, to multistripes & warps there is a design to suit all.

Quality Features:

TEXgard coating

This is an invisible coating around each individual fibre which offers excellent:

- Water repellence and protection against
- Oil
- Grease
- Mould & Algae growth
- All other environmental influences

UV rated 801

Increases the natural exposure of human skin to direct sunlight by upto 80 times subject to skin type.

Colour, light & weather fast

The colours stay true & brilliant for the life of the awning no matter how intense the sunlight.

Promotes positive effects on well being

- Harmony – through balanced colours & stripe combinations
- Vitality – through intensive colour contrasts
- Joie De Vivre – through vibrant colours
- Inner Peace – through neutral shades of colour

Every material can be signwritten if required with company names, logos and products/ services offered.



fabrics...



Your Caribbean Quality Awning is equipped with the latest radio controlled motor, controls & sensors for ease of operation and to maximise usage.

The integral motor allows effortlessly at the touch of a button your **Caribbean Quality Awning** to extend or retract and with the further addition of light & wind sensors your awning will automatically think for itself.

Quality Features:

RTS Radio Technology Somfy

Wireless control of your Caribbean Quality Awning

- 200m range in open space
- 20m range through two reinforced concrete walls
- 100% secure due to a rolling security code
- Minimal risk of interference due to 433,42Mhz frequency
- Upgradeable at a later date (ie the addition of further transmitters & sensors)

Choice of transmitters

Individual or group control

- Pure handset: neutral colour & clean sober lines
- Patio handset: shock & splash proof for outdoor life
- Situo switch: slimline, neutral design for mounting to window frames

Sensors

Automatic extension or retraction dependent on weather

- Eolis: wind only protection
- Soliris: sunlight & wind protection

Manual operation is available via a gearbox & crank handle but is not recommended and is only suitable for occasional use.



Integral tubular motor

Situo



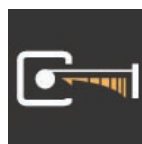
Patio



Soliris



Radio Technology Somfy



Soft Close Function



Awning Electronic Control

motors & controls...



Algarve



Bermuda



Panama



San Juan

The added extras that make all the difference to the use and versatility of your **Caribbean Quality Awning**.

Algarve - perfect under awning heating

- Heat effect within seconds of switching on
- Only heats people and objects – not the air in between
- Gives off a sensational warm red glow

Bermuda - perfect under awning lighting

- Puts light where you want it – directly under the awning
- 35w halogen lamps give off a subtle golden ambient glow
- Mounts under any **Caribbean Quality Awning**

Panama - privacy screen/windbreak

- Simply extends out from its own cassette and connects to a front post
- Ideal for stopping the sun creeping in from the side of your **Caribbean Quality Awning**
- Front post can be permanently fixed in position or removable if required

San Juan - promotional barrier

- Ideal for marking out the perimeter and sectioning off your pavement area
- A great way to promote the products and services you offer
- Modular system that simply clips together

accessories...

Your Caribbean Quality Awning offers you far more than just sun & shower protection.

Your **Caribbean Quality Awning** dramatically transforms the appearance of the façade by adding a new dimension & splash of colour. The adjoining internal room also benefits from a reduction in solar heat gain and protection of carpets, furnishings & décor from fading.

Further benefits include:

Domestic

- Extends the living area into the garden
- Added seclusion & privacy within your garden
- A cosy place to relax & unwind
- Great for parties & barbeques
- Entertain in style & sophistication – be the envy of your neighbours

Hospitality

- Increases the number of covers, thus increasing sales, turnover and more importantly profit
- Makes your company & premises stand out from the competition
- Increases customer awareness of your business
- The framework can be powdercoated any colour to match or contrast corporate identity
- Promotes the image you want

There are tens of thousands of **Caribbean Quality Awnings** installed throughout the United Kingdom & Europe which have enhanced, protected and prolonged the use of patio areas for the better!

There are many other products within the **Caribbean Quality Brand** which include:

- Window canopies
- Drop arm awnings
- Exterior conservatory blinds
- Exterior screens
- Parasols
- Bespoke blinds



the many benefits...



Caribbean Blinds (UK) Ltd (manufacturer of the Caribbean Quality Awnings brand) are full members of the British Blind & Shutter Association, the governing body of the blind industry, for extra reassurance and peace of mind!



The full range of Caribbean Quality Awnings are suitable for:

COMMERCIAL

Pubs & Beer Gardens
Bars & Cafes
Shops & Restaurants
Hotels
Golf Clubs
Offices
Factories & Warehouses

EDUCATIONAL FACILITIES

Playschool
Kindergarden
Primary
Secondary
Colleges
Universities

DOMESTIC

Houses
Bungalows
Extensions
Gardens
Apartments

Your local authorised distributor who will offer you the complete personal service, from initial site survey and quotation through to installation and maintenance